

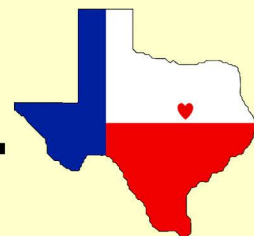
Heart of Texas Goodwill Industries, Inc.

Annual Report 2013



**Heart of Texas
Goodwill Industries, Inc.**

Serving the community since 1955



Belton Grand Opening Retail Store & Learning Center



On October 17th, 2013, Heart of Texas Goodwill opened our newest location in Belton, Texas. The building houses a retail store, donation drive-thru, and a Learning Center and is the first Goodwill location in Belton.



The opening was celebrated with a ribbon-cutting ceremony in conjunction with the Belton Chamber of Commerce.

Popcorn, soda, give-aways, and door prizes raffles were available to shoppers, free of charge.



EXECUTIVE STAFF

Daniel Nisley
President & CEO

Charlsey Nisley
COO

Shannon Kendrick
*Mission Services
Director*

Tonya Nunn
*Director of
Accounting*

Susana Wolfe
*Human Resources
Director*

Kevin Ringer
Asset Protection

Deborah Waters
*Facilities & Special Projects
Director*

Kirby Killough
*Marketing &
Communications Director*

Cecilia Davis
*South Regional Retail
Sales Manager*

Shawna Dallas
*North Regional Retail
Sales Manager*

Patsy Conrad
*Assistant Regional Retail
Sales Manager*

Brandy Monnens
*South Business
Manager*

Danielle Palmieri
*Human Resources
Manager*

Steven Gill
*South Plant
Manager*

David Smith
*South Transportation
Manager*

Geoff Brannon
*North Transportation
Manager*

Charles Wallace
*New Goods Production
Manager*

BOARD OF DIRECTORS

Steve R. Wolfe
Chairman

Nathan Sloan
Vice Chairman

Aubrey Brickhouse
Treasurer

Kelly Barr
Secretary

Dick Dwinell
Former Chairman

James Anderson

Kim Barr

Harold Broussard

Randy Brown

William Cofield

Donna Dill

Don Johnson

Gene Weaver

Keith Williamson

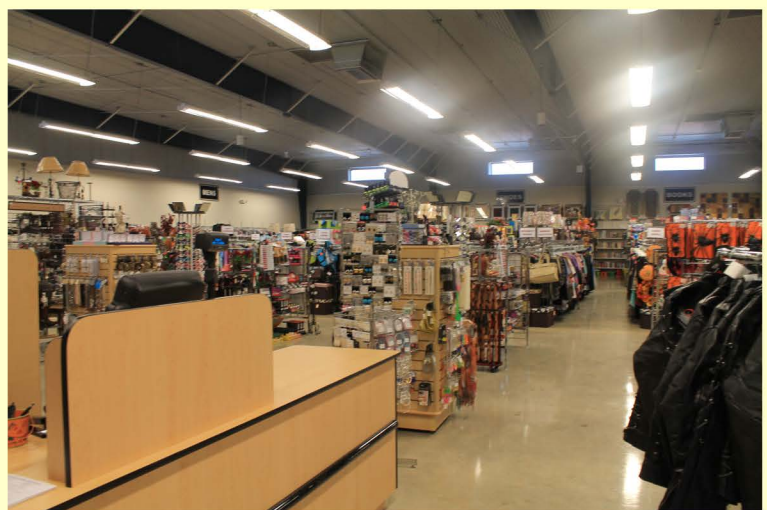
Daniel Nisley

“Our mission is to actively pursue the full participation in society of people with disabilities and disadvantages by expanding their opportunities and capabilities through our employment and training programs.”

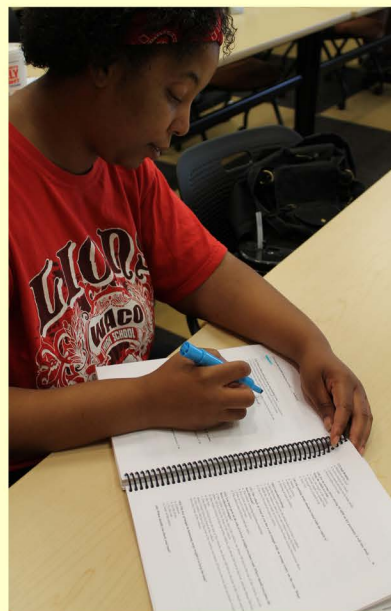
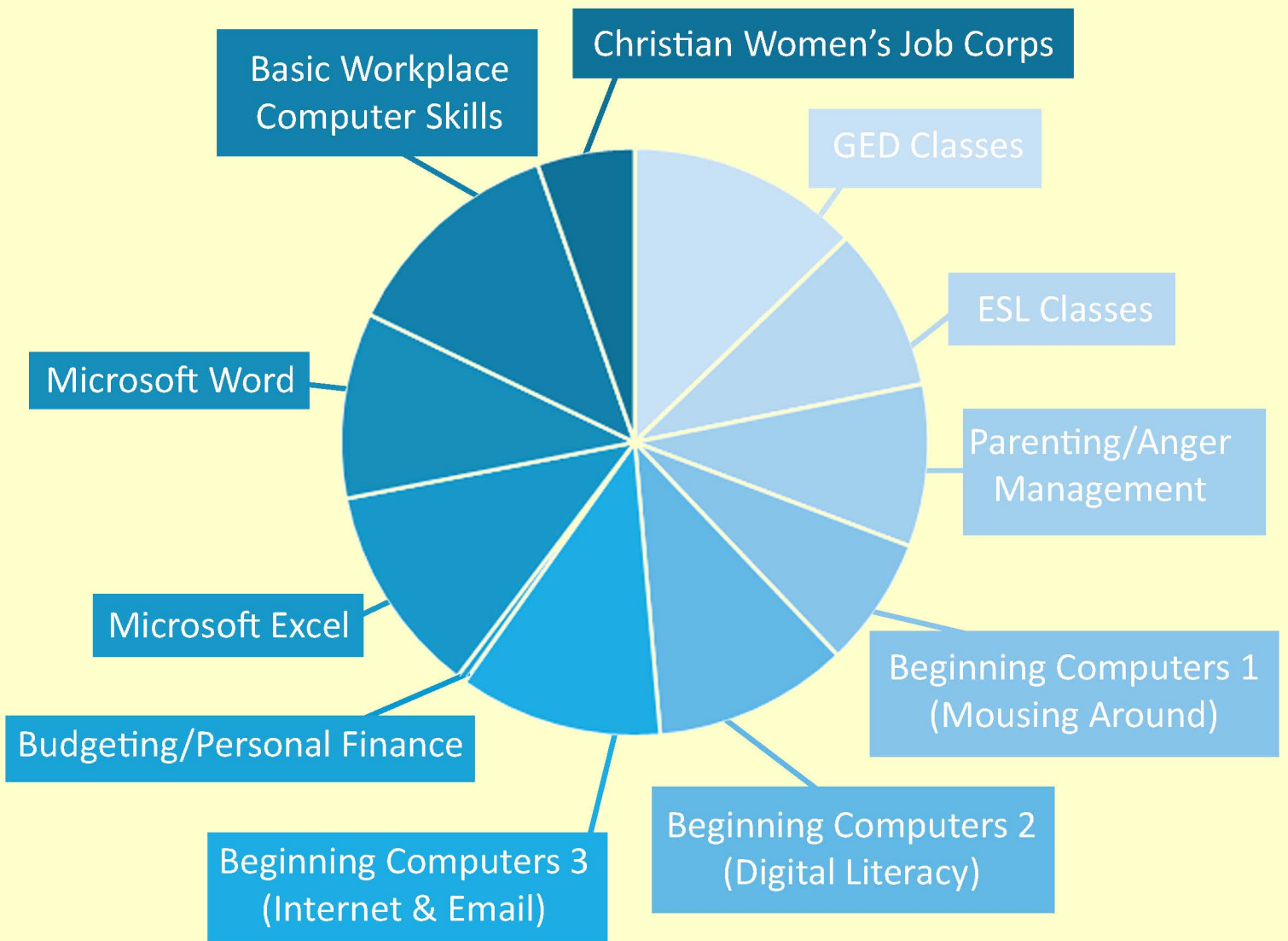


“The new Learning Center is one of the ways Goodwill can best expand its services to Belton. People can receive assistance in areas such as financial strengthening, parenting, GED preparation, ESL instruction, and other life skills needs,” states Shannon Kendrick, Mission Services Director.

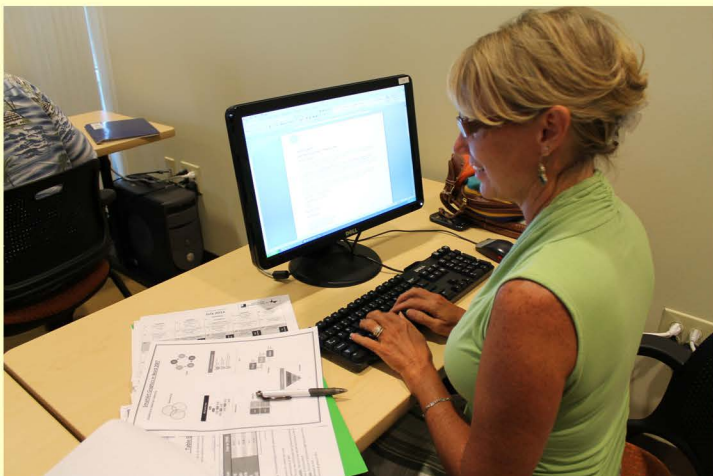
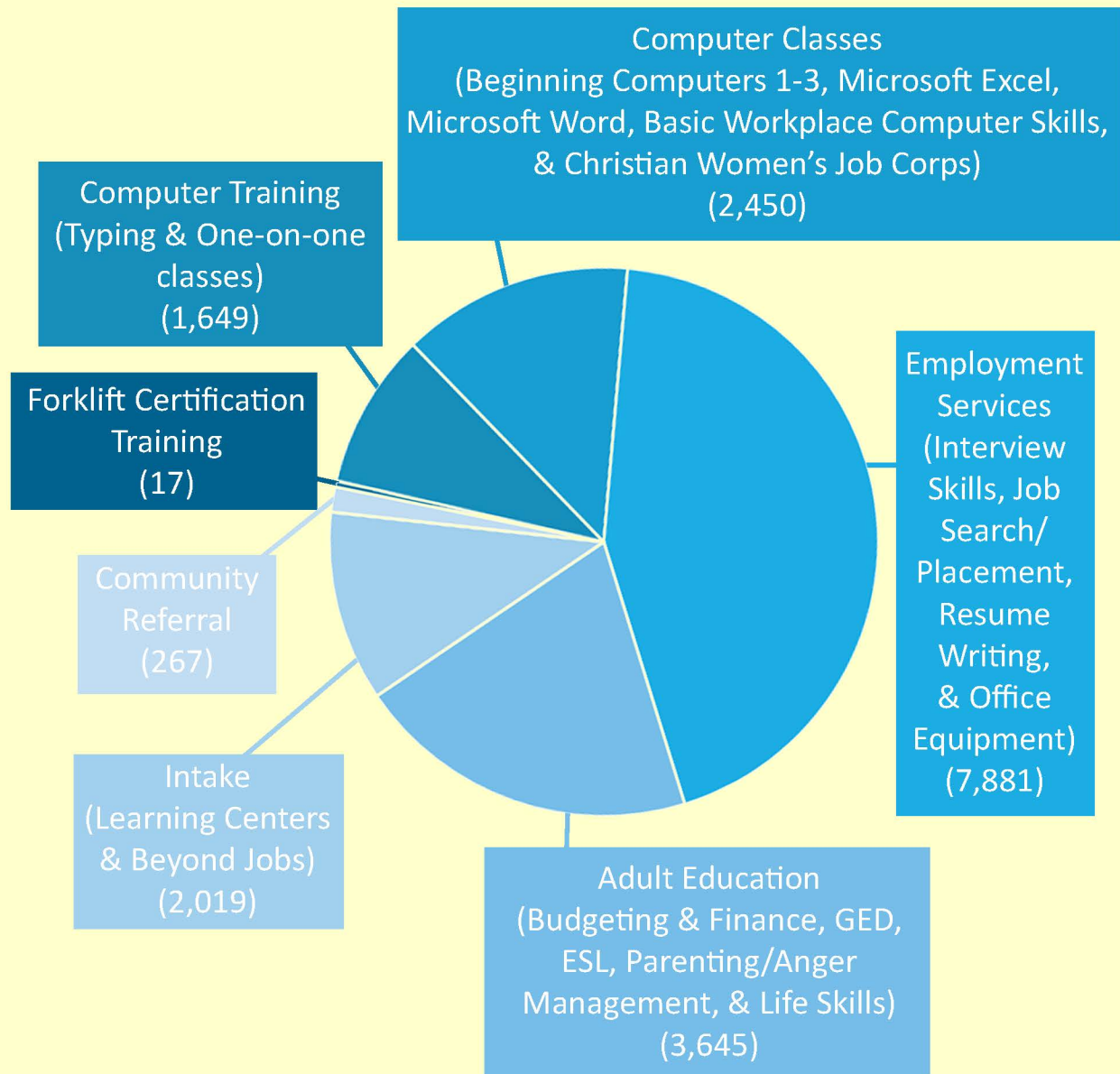
The Belton Learning Center has a classroom, computer lab, training room, and a staff of counselors available to guide participants in their journey towards employment, all free to the public.



CLASSES HELD



PEOPLE SERVED

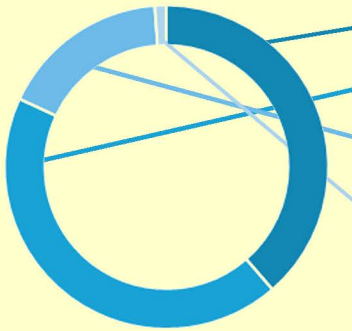


**TOTAL NUMBER
OF PEOPLE SERVED IN
ALL PROGRAMS**

2013: 4,927
2012: 4,486

Financial Report

The Community Gave to Goodwill (Revenues)



Net Retail Sales: \$4,682,213

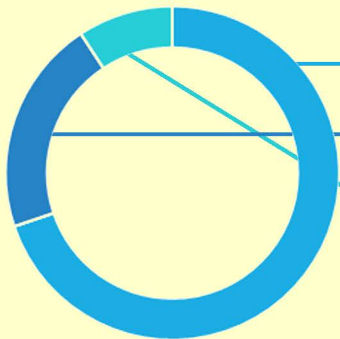
Donated Goods: \$5,242,727

Contract, Salvage,
& Other Services: \$2,049,788

Other: \$139,942

TOTAL: \$11,974,728

Goodwill Gave to the Community (Expenses)

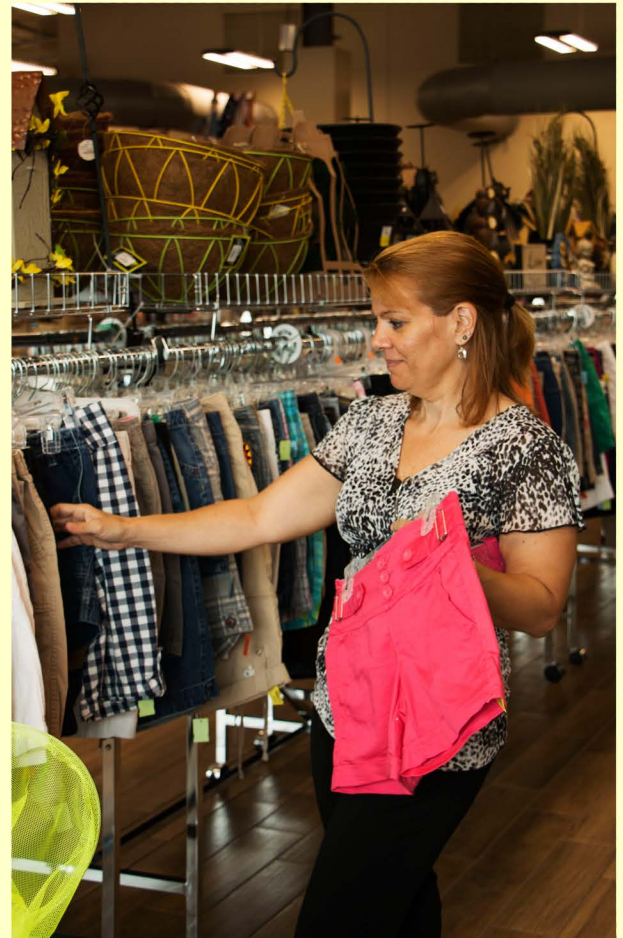


Salaries, Wages
& Benefits: \$7,526,361

Operational Expenses: \$2,253,335

Other: \$997,673

TOTAL: \$10,777,369



SUMMARY OF TOTAL ASSETS & LIABILITIES

Cash & Equivalents:	\$10,214,262	Deferred Revenue:	\$11,752
Trade Accounts Receivable:	73,129	Accounts Payable & Accrued Expenses:	1,153,860
Insurance Settlement Receivable:	112,962	TOTAL CURRENT LIABILITIES:	\$1,550,365
Inventories:	1,361,072	Deferred Compensation:	939,250
Prepaid Expenses:	262,312	Notes Payable:	9,639,333
TOTAL CURRENT ASSETS:	\$12,023,737	TOTAL LIABILITIES:	\$12,128,948
Land, Buildings, & Equipment:	18,251,878	Total Net Assets:	19,123,100
Other Assets:	976,433		
TOTAL ASSETS:	\$31,252,048	TOTAL LIABILITIES & NET ASSETS:	\$31,252,048